

RETLAW INDUSTRIES

PULLEY DIVISION



MANUFACTURERS OF HIGH QUALITY
PULLEYS AND SPROCKETS

Table of Contents:

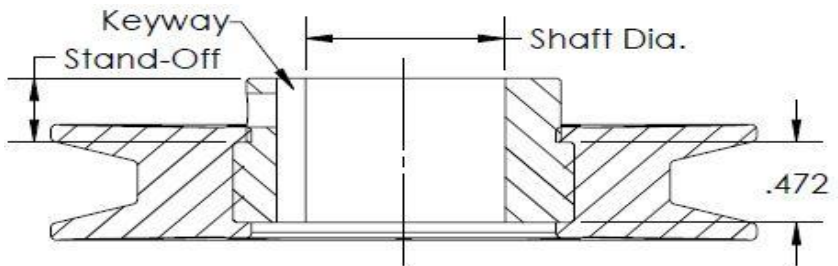
Drive and Bore Adaptors.....	3
Clevis Adaptors.....	4
Shoulder Adaptors.....	5
Flat Idler Pulleys.....	6
Flat Idler Pulleys Continued and V-Belt Idler Pulleys.....	7
Cable Idler Pulleys.....	8
Round Belt Idler Pulleys.....	9
Flangeless Flat Idler Pulleys.....	10
Roller Chain Sprockets.....	11
Innovative Solutions.....	12

Retlaw Advantage...

- Serving the molding and power transmission industry for nearly 40 years.
- All stock items available for immediate delivery.
- All pulleys are interchangeable for multiple configurations using bore, shoulder, clevis and drive adaptors.
- Pulleys are precision insert molded concentrically around the bearings. (+/- .007 T.I.R.)
- Engineered one piece design is immune to rivet fatigue and failure often found in two piece designs.
- Thermoplastic construction is resistant to many oils, solvents and acids.
- Lower coefficient of friction reduces wear, while increasing belt life and lowering maintenance costs.
- Wide variety of bearing and seal design choices including stainless steel bearings, single, dual and triple lip seals.
- Seal materials including but not limited to:
 - *Acrylonitrile-butadiene rubber (NBR)
 - *Hydrogenated acrylonitrile-butadiene rubber (HNBR)
 - *Fluoro rubbers (FKM)
 - *Polyurethane (AU)



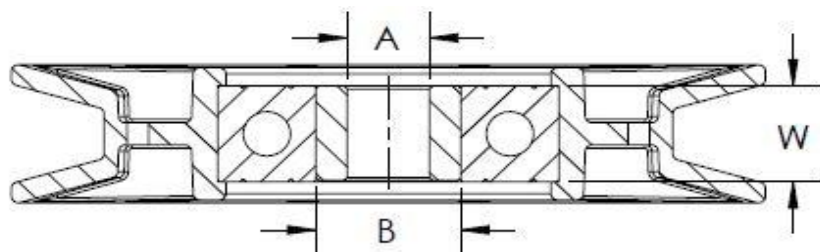
MOUNTING ADAPTORS



DRIVE ADAPTORS

Includes 10-32 Nylock Set Screw

PART NO.	SHAFT DIA.	STAND-OFF	KEYWAY
DA-38	0.375	0.375	0.125
DA-50	0.500	0.375	0.188
DA-63	0.625	0.375	0.188
DA-75	0.750	0.375	0.188
DA-100	1.000	0.375	0.250



BORE ADAPTORS

PART NO.	A	B	W
BA-01P	0.381	17mm	12mm
BA-001P	0.390	15mm	10.85mm
BA-015P	0.478	17mm	12mm
BA-02P	0.506	17mm	12mm
BA-03P	0.419	17mm	12mm

Note: All Dimensions are for reference only.

PHONE: 888-412-9088

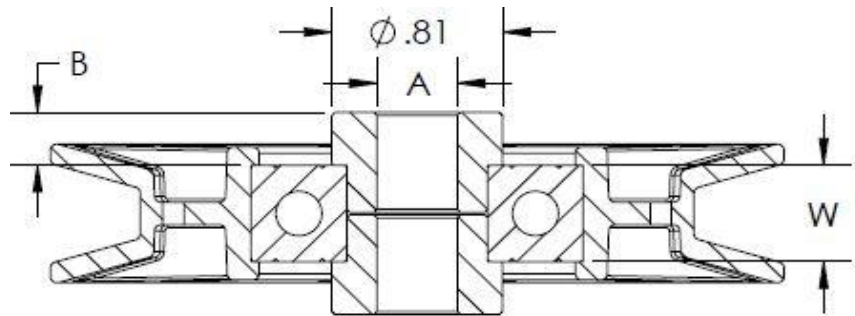
www.retlawindustries.com

FAX: 262-367-5162



PAGE 4

MOUNTING ADAPTORS CONT.



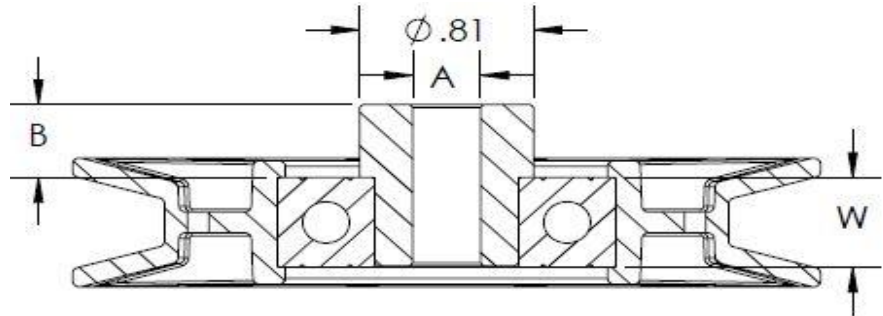
CLEVIS ADAPTORS

2 Units required per assembly

PART NO.	A	B	W
CA-005P	0.390	0.17	12mm
CA-01P	0.381	0.26	12mm
CA-02P	0.506	0.26	12mm
CA-05P	0.381	0.51	12mm
CA-06P	0.506	0.51	12mm
CA-07P	0.381	0.76	12mm
CA-08P	0.506	0.76	12mm



MOUNTING ADAPTORS CONT.



SHOULDER ADAPTORS

PART NO.	A	B	W
SA-00	0.316	0.39	12mm
SA-00P	0.329	0.39	12mm
SA-000P	0.317	0.59	12mm
SA-01	0.378	0.15	12mm
SA-01P	0.329	0.17	12mm
SA-001P	0.318	0.79	12mm
FA-001P	0.381	0.36	12mm
SA-015P	0.381	0.20	12mm
SA-02P	0.381	0.26	12mm
SA-025P	0.381	0.31	12mm
SA-03P	0.381	0.41	12mm
SA-04P	0.382	0.46	12mm
SA-06P	0.381	0.51	12mm
SA-063P	0.419	0.51	12mm
SA-065P	0.498	0.51	12mm
SA-07P	0.381	0.59	12mm
SA-08P	0.381	0.76	12mm
SA-10P	0.419	0.30	12mm
SA-11P	0.270	0.29	12mm
*SA15TP	0.257	0.17	12mm
SA-20P	0.506	0.27	12mm
SA-25P	0.506	0.51	12mm
SA-30P	0.506	0.76	12mm

Note: All Dimensions are for reference only. *** T indicates threaded

PHONE: 888-412-9088

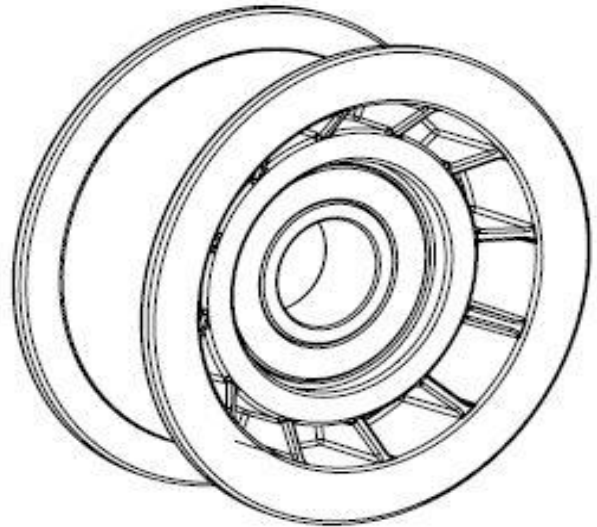
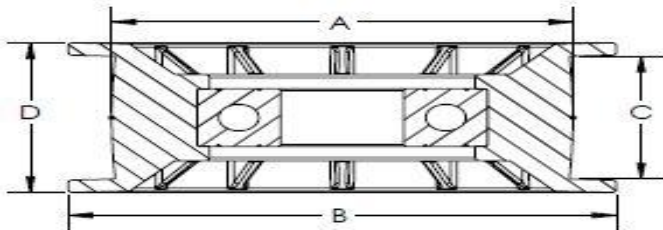
www.retlawindustries.com

FAX: 262-367-5162



PAGE 6

PULLEYS



FLAT IDLER PULLEYS

PART NO.	A	B	C	D	CROWN	BORE
FIP1750-0.75	1.75	2.22	0.75	0.93	0.015	17mm
FIP1875-0.50	1.88	2.12	0.51	0.70	0.005	17mm
FIP1875-0.50SF	1.88	2.12	0.50	0.69	0.005	17mm
FIP1875-0.50TF	1.88	2.28	0.50	0.70	0.006	17mm
FIP1875-0.75	1.88	2.00	0.77	0.97	0.020	17mm
FIP1875-1.38	1.88	2.09	1.39	1.56	0.020	17mm
FIP2000-1.02	2.00	2.35	1.01	1.18	0.020	17mm
FIP2250-0.75	2.25	2.72	0.75	0.93	0.016	17mm
FIP2500-0.75	2.50	2.97	0.76	0.93	0.020	17mm
FIP2500-1.00	2.50	2.97	1.01	1.23	0.020	17mm
FIP2500-1.00	2.50	2.75	1.01	1.23	NONE	17mm
FIP2750-0.75	2.75	3.22	0.76	0.93	0.016	17mm
FIP2750-0.86	2.75	3.19	0.86	1.06	0.017	17mm
FIP2750-1.00	2.75	3.22	1.00	1.18	0.020	17mm
FIP3000-0.75	3.00	3.50	0.76	1.03	0.014	17mm
FIP3000-1.01	3.00	3.47	1.01	1.25	0.020	17mm
FIP3000-1.01	3.00	3.47	1.02	1.25	NONE	17mm
FIP3120-0.75	3.12	4.00	0.76	1.11	0.015	17mm

FIP3500-0.75	3.50	4.12	0.76	0.97	0.015	17mm
FIP3500-0.97	3.50	3.97	1.01	1.21	0.020	17mm
FIP4000-0.72	4.00	4.60	0.72	1.06	0.015	17mm

Note: All Dimensions are for reference only.

PHONE: 888-412-9088

www.retlawindustries.com

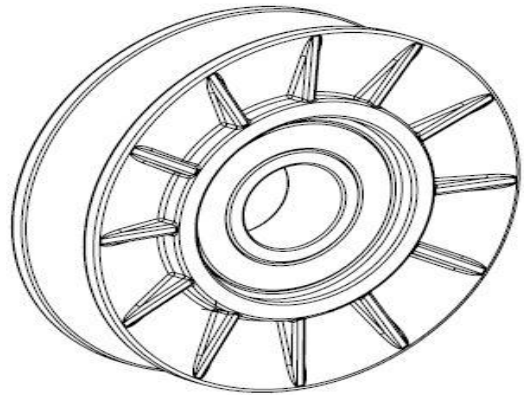
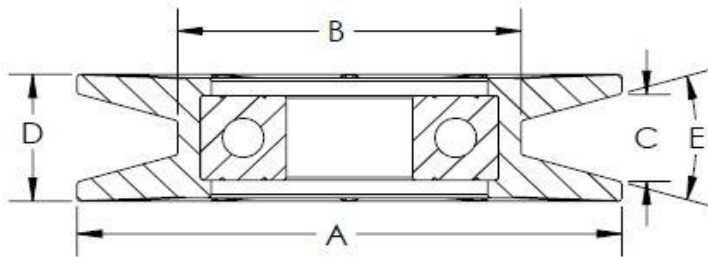
FAX: 262-367-5162



PAGE 7

FLAT IDLER PULLEYS CONT.

PART NO.	A	B	C	D	CROWN	BORE
FIP4000-0.86	4.00	4.75	0.86	1.36	0.017	17mm
FIP4000-1.00	4.00	4.62	1.00	1.02	0.020	17mm
FIP4500-0.96	4.50	4.96	0.96	1.13	0.020	17mm
FIP5000-1.25	5.00	5.84	1.27	1.53	0.025	17mm
FIP5500-1.00	5.50	6.00	1.04	1.31	0.011	17mm
FIP6000-0.75	6.00	6.50	0.78	1.00	0.011	17mm
FIP6000-1.00	6.00	6.50	1.00	1.26	0.020	17mm



V-BELT IDLER PULLEYS

PART NO.	A	B	C	D	E	BELT SIZE	BORE
VIP2000-2.112	2.03	1.36	0.39	0.61	32 DEG.	A	10mm
VIP2500-2.740	2.50	1.75	0.50	0.74	32 DEG.	A	17mm
VIP2750-3.105	2.75	1.79	0.58	0.76	34 DEG.	A	17mm
VIP2875-3.190	2.88	1.81	0.49	0.71	32 DEG.	A	17mm
VIP3000-3.105	3.00	1.79	0.63	0.81	34 DEG.	B	17mm
VIP3000-3.316	3.00	1.90	0.48	0.66	32 DEG.	A	17mm
VIP3470-3.575	3.47	2.25	0.64	0.78	34 DEG.	B	17mm
VIP3480-3.765	3.48	2.63	0.48	0.68	32 DEG.	A	17mm
VIP3560-3.585	3.56	2.48	0.57	0.78	34 DEG.	A	17mm
VIP4000-4.105	4.00	2.77	0.63	0.78	34 DEG.	B	17mm
VIP4000-4.316	4.00	2.61	0.48	0.85	34 DEG.	A	17mm
VIP5000-5.200	5.00	2.98	0.88	1.10	36 DEG.	B/C	17mm

VIP5000-5.403	5.00	3.78	0.63	0.85	34 DEG.	B	17mm
VIP6000-6.200	6.00	4.00	0.88	1.12	36 DEG.	B/C	17mm
VIP6000-6.403	6.00	4.77	0.62	0.84	34 DEG.	B	17mm
VIP7000-6.465	7.00	5.00	0.91	1.14	34 DEG.	B/C	17mm

Note: All Dimensions are for reference only.

PHONE: 888-412-9088

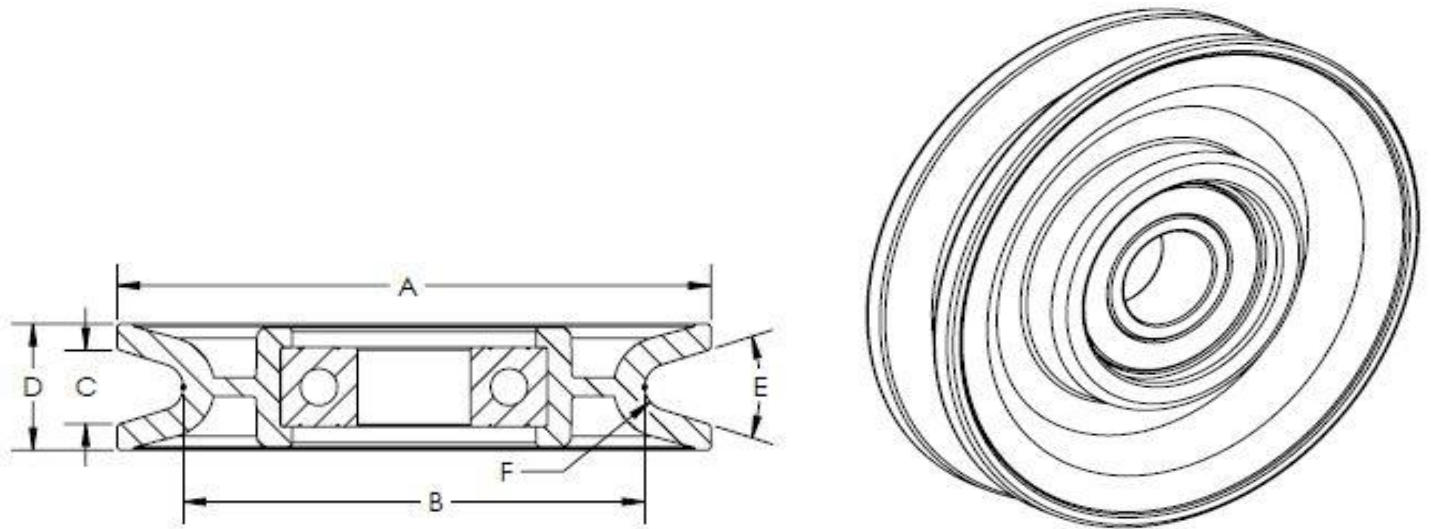
www.retlawindustries.com

FAX: 262-367-5162



PAGE 8

PULLEYS CONT.



CABLE IDLER PULLEYS

PART NO.	A	B	C	D	E	F	DIA.	BORE
CIP2500-.188	2.50	1.75	0.37	0.75	32 DEG.	R 0.103	3/16	17mm
CIP2500-.250	2.50	1.75	0.42	0.75	32 DEG.	R 0.138	1/4	17mm
CIP3000-.188	3.00	2.20	0.38	0.75	32 DEG.	R 0.103	3/16	17mm
CIP3000-.250	3.00	2.20	0.44	0.75	32 DEG.	R 0.138	1/4	17mm
CIP3500-.188	3.50	2.72	0.39	0.75	35 DEG.	R 0.103	3/16	17mm
CIP3500-.250	3.50	2.72	0.44	0.75	35 DEG.	R 0.138	1/4	17mm
CIP4000-.188	4.00	3.20	0.40	0.75	35 DEG.	R 0.103	3/16	17mm
CIP4000-.250	4.00	3.20	0.45	0.75	35 DEG.	R 0.138	1/4	17mm
CIP4500-.188	4.50	3.68	0.40	0.75	35 DEG.	R 0.103	3/16	17mm
CIP4500-.250	4.50	3.68	0.45	0.75	35 DEG.	R 0.138	1/4	17mm
CIP5000-.188	5.00	4.18	0.40	0.75	35 DEG.	R 0.103	3/16	17 mm
CIP5000-.250	5.00	4.18	0.45	0.75	35 DEG.	R 0.138	1/4	17mm
CIP6000-.188	6.00	5.18	0.40	0.75	35 DEG.	R 0.103	3/16	17mm
CIP6000-.250	6.00	5.18	0.45	0.75	35 DEG.	R 0.138	1/4	17mm

Note: All Dimensions are for reference only.

PHONE: 888-412-9088

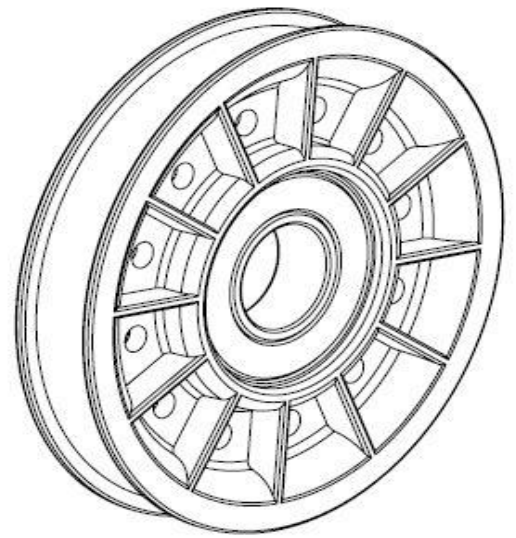
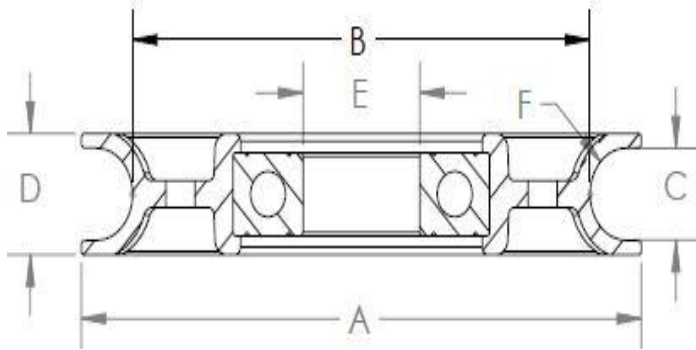
www.retlawindustries.com

FAX: 262-367-5162



PAGE 9

PULLEYS CONT.



ROUND BELT IDLER PULLEYS

PART NO.	A	B	C	D	E	F
RIP2125-.180	2.13	1.63	0.36	0.50	15mm	R.170
RIP2500-.190	2.50	1.88	0.36	0.65	17mm	R.195
RIP3000-.190	3.08	2.44	0.39	0.65	17mm	R.195
RIP3000-.190N	3.00	2.45	0.38	0.50	0.625	R.195
RIP3500-.190	3.50	2.88	0.39	0.65	17mm	R.195
RIP4000-.190	4.00	3.38	0.38	0.65	17mm	R.195

Note: All Dimensions are for reference only.

PHONE: 888-412-9088

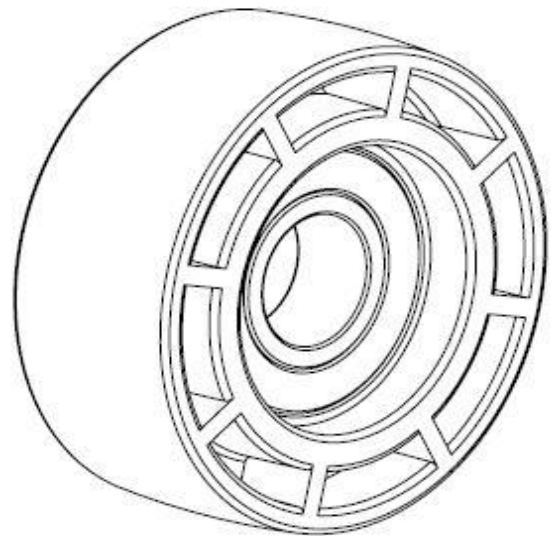
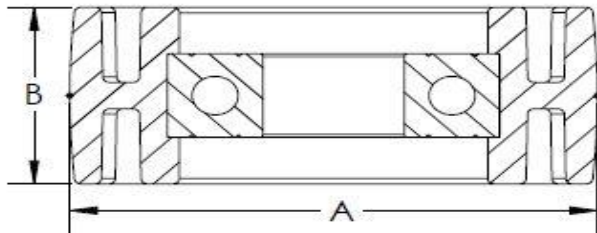
www.retlawindustries.com

FAX: 262-367-5162



PAGE 10

PULLEYS CONT.



FLANGELESS FLAT IDLER PULLEYS

PART NO.	A	B	BORE	CROWN
FFIP2000-1.00	2.00	1.00	17mm	0.025
FFIP2000-1.25	2.00	1.25	17mm	0.031
FFIP2500-1.00	2.50	1.00	17mm	0.025
FFIP2500-1.25	2.50	1.25	17mm	0.031
FFIP3000-1.00	3.00	1.00	17mm	0.025
FFIP3000-1.25	3.00	1.25	17mm	0.031

Note: All Dimensions are for reference only.

PHONE: 888-412-9088

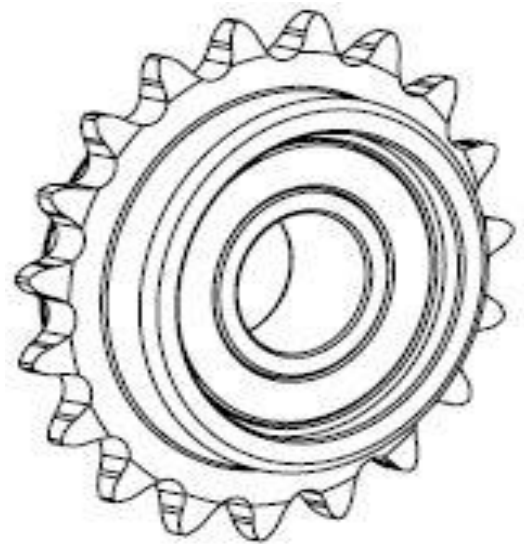
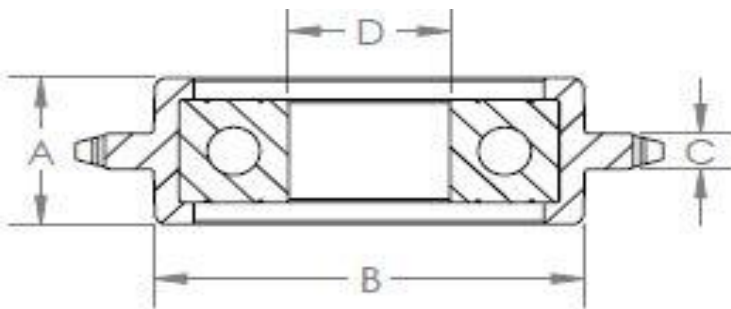
www.retlawindustries.com

FAX: 262-367-5162



PAGE 11

SPROCKETS



ROLLER CHAIN SPROCKETS

PART NO.	CHAIN#	# OF TEETH	A	B	C	D	SPROCKET OD	PITCH DIA.	HUB LENGTH
RCS35	35	19	0.67	1.78	0.160	17mm	2.50	2.28	0.67
RCS40	40	17	0.67	1.78	0.274	17mm	3.00	2.72	0.67
RCS50	50	15	0.67	1.78	0.334	17mm	3.31	3.01	0.67
RCS60	60	13	0.67	1.78	0.449	17mm	3.50	3.13	0.67
RCS80	80	12	0.67	1.78	0.565	17mm	4.4	3.86	0.67

PHONE: 888-412-9088

Note: All Dimensions are for reference only.

www.retlawindustries.com

FAX: 262-367-5162



PAGE 12

Innovative Solutions

Retlaw Industries, Inc. has been specializing in developing and providing quality products to Original Equipment Manufacturers (OEM) since 1977. Our team strives to go beyond the norm in innovation and cost effectiveness when designing and manufacturing custom products along with proprietary Belt, Cable, Rope and Chain Management Systems. We understand each customer has specific needs and applications for their products. From conception through completion Retlaw Industries various departments can assist you through product development, engineering, tooling and manufacturing.

Look for us on the internet at: www.RetlawIndustries.com

Unless otherwise specified all dimensions are in inches.

Information and dimensions are subject to change without prior notification.

Visit www.retlawindustries.com/catalogs for most current information.

Please contact us for custom sizes not listed in the brochure.

PHONE: 888-412-9088

www.retlawindustries.com

FAX: 262-367-5162

RETLAW INDUSTRIES, INC.

06/2014